

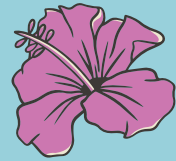


FUNCTION PACK

With a mix of old Queensland heritage down the front and our fun fresh casual dining and a sprawling outdoor area out the back, Matso's Sunshine Coast has something for everyone.

We specialise in low key good times, whether you're looking for a casual work do, or have a birthday coming up, let us help you put on a good time for you and your people.

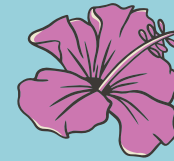
functions@matsosqld.com.au



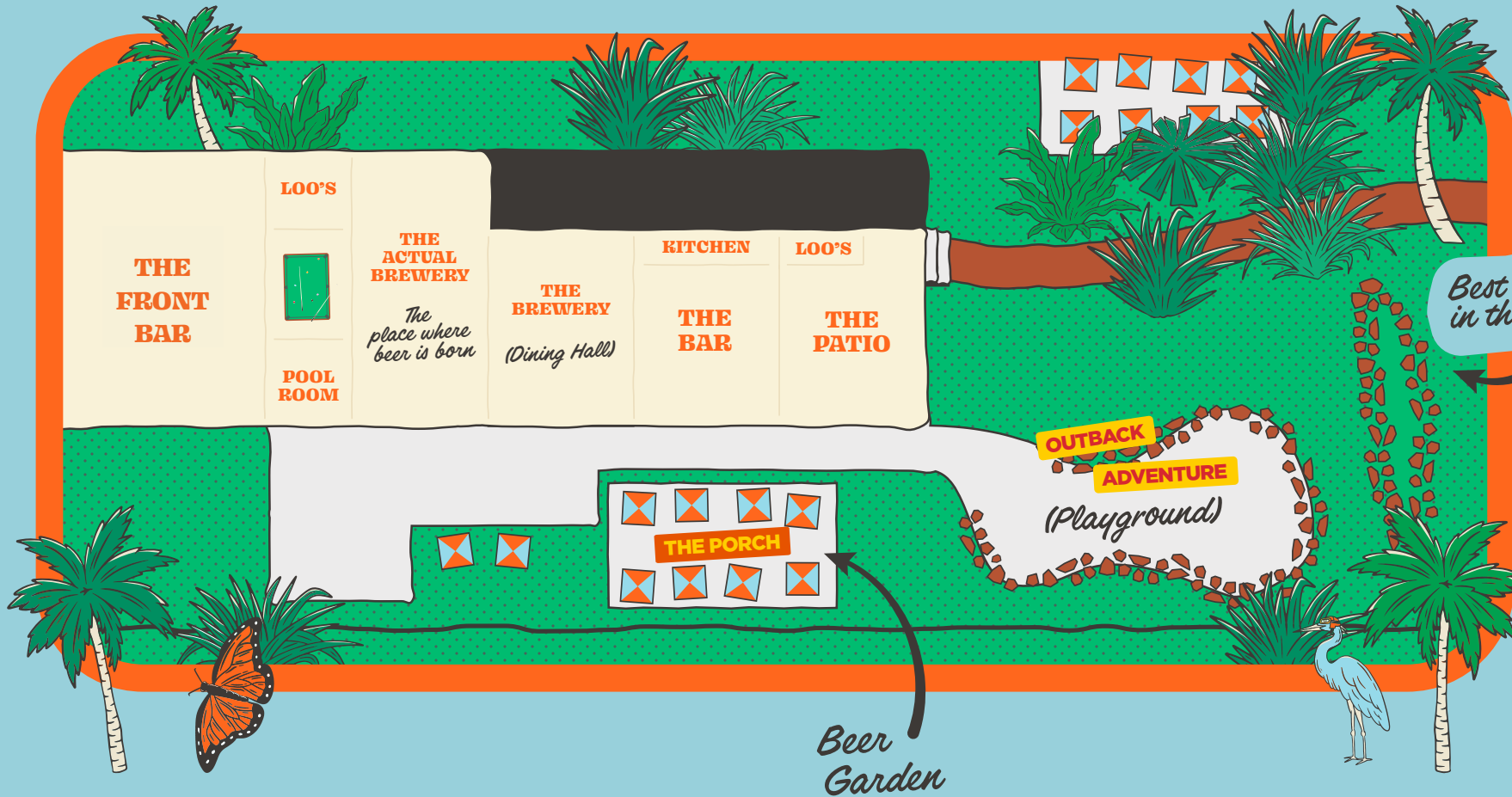
Welcome to

MATSO'S

Sunshine Coast



MEMORIAL DRIVE



Best views in the house!

Beer Garden



THE BREWERY

(Dining Hall)

80-100 Pax

Park up in our dining hall, right next to our brewery – with a mix of low table & bench seating, this area is ideal for large group functions. Suitable for groups of 80-100 guests.



THE BAR

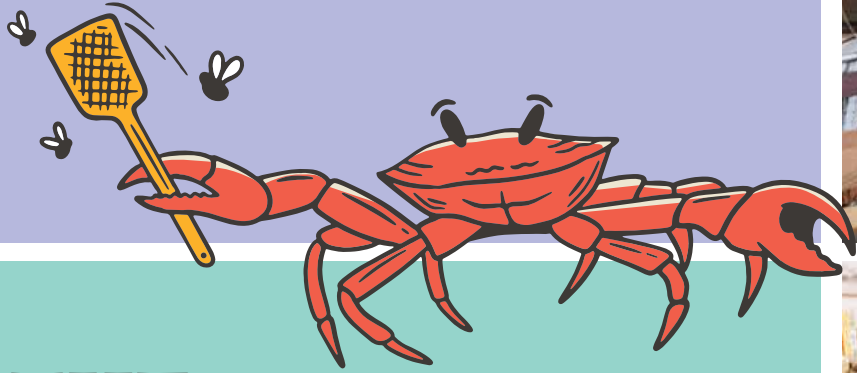
16-32 Pax

Perch up right in front of our Brewery bar. This area has high table seating & is perfect for those smaller group catch-ups! Suitable for groups ranging from 16-32 guests.

THE PATIO

40-70 Pax

Located on the other side of the bar, our patio area has a mix of low table & high tables, with a great view of our backyard. This area is great for larger group's with ankle biters that want to roam our amazing Outdoor Playground, while the parents get to kick back and relax with a drink or two.

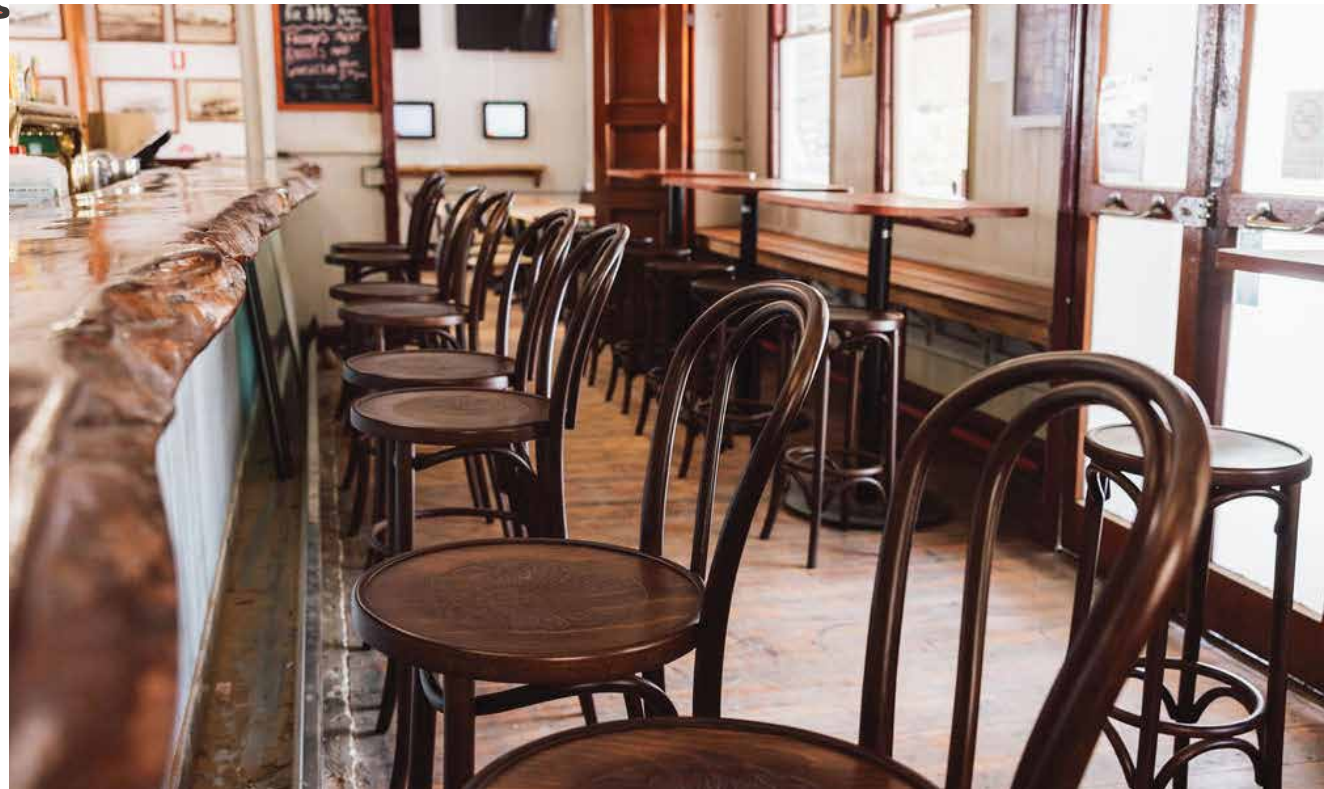


THE FRONT BAR

30-60 Pax

Looking for that old school charm? Joes front bar is available for exclusive use and is perfect for groups from 30 – 60 guests. Enjoy access to a private bar, bathrooms, option to play your own music and direct access to our pool table.

Have a chat with the team about availability and minimum spend.





Have a group larger than 100? Hit us up about what we can do to cater for your group.

Keen for a Coupla?

Looking to leave the keys at home? Have a chat with our crew about shuttle bus pick up and drop off, for groups over 20.



CANAPE PACKAGES

Feeling Peckish

\$40 Per Person – (2 Hrs)

Sweet Potato Croquettes (GF)
Tandoori Chicken Skewers (GF)
Chilli Prawn Tostada
Margarita Pizza (VG)
Pork & Fennel Pizza

Load Me Up

\$50 Per Person – (3 Hrs)

Sweet Potato Croquettes (GF)
Chilli Prawn Tostada
Crispy Pork Sliders
Popcorn Chicken
Margherita Pizza (VG)
Pork & Fennel Pizza

The Hunger Is Real

\$60 Per Person – (4 Hrs)

Oysters
Tandoori Chicken Skewers (GF)
Sweet Potato Croquettes (GF)
Chilli Prawn Tostada
Crispy Pork Sliders
Popcorn Chicken
Margherita Pizza (VG)
Pork & Fennel Pizza

GF Pack

\$45 Per Person

**Can be added to any food
package above*

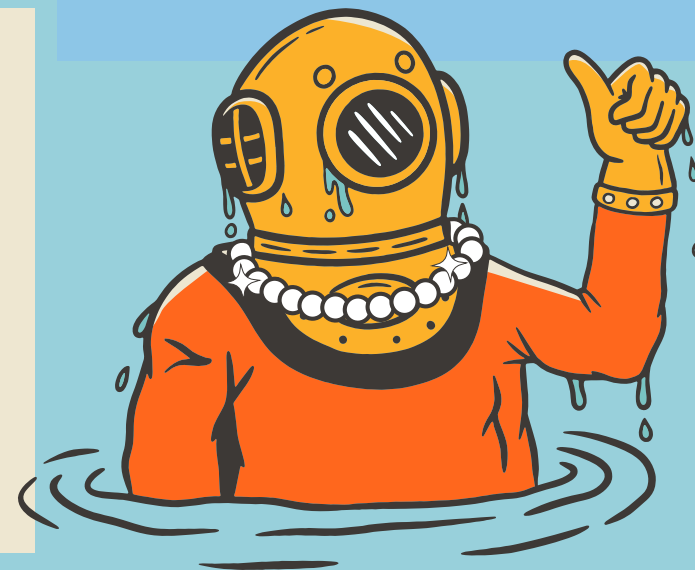
Sweet Potato Croquettes (GF)
Tandoori Chicken Skewers (GF)
Chilli Prawn Tostada (GF)
Katsu Curry Fries (GF)
Cheesy Garlic Bread (GF)

Veg Pack

\$45 Per Person

**Can be added to any food
package above*

Sweet Potato Croquettes (GF)
Falafel Tostada (GF)
Haloumi Sliders
Zucchini Corn Fritters (GF)
Wood-fired Bread & Dip



FAQ'S

Do you offer drink packages?

We do not offer drink packages here at Matso's. However, you are welcome to set up a tab for your guests at the bar. We can work with you to determine a maximum spend and any restrictions you may wish to impose on the tab. The tab will be secured on the day of your function by handing over a Driver's License & Valid Credit Card to be kept on file. Once your function has finished, the drinks TAB will be charged off & Drivers License & Credit Card returned.

Can I bring in my own decorations?

You are welcome to bring your own decorations, however, to reduce rubbish & waste, confetti is not permitted, and all balloons must be on a fixed weight

Can I bring in a cake?

For sure! Simply speak to one of our friendly staff & we can store this in our fridge until required. You will need to provide your own candles and lighter if you require.

Can we BYO?

As we are a fully licensed brewery & catered venue, we do not permit guests to bring in their own alcohol and food, with the exception being a cake for your function.

Do you cater for dietary requirements?

As listed in our food packages, we do offer GF & Vegetarian options. If you require anything other than this, please let us know & we can do our best to accommodate and ensure everyone is catered for to the best of our ability. Please note, sufficient notice must be given to our team to ensure we can cater for any specific requirements.

Can kids come?

Everyone is welcome here at Matso's Sunshine Coast, but we are big brew pub and a licenced venue, which means that anyone under the age of 18 must be accompanied by, and under the supervision of, their parent or legal guardian at all times.

Catering for ankle biters.

Kids meals can be ordered on the day from our regular menu. Children under 12 do not need to be counted as part of your final numbers for any catering packages.



TERMS & CONDITIONS

Confirmation and payment

We do not hold tentative bookings. A function booking is secure and confirmed once we have received the signed and completed booking form.

- We require full payment of catering invoice within three (3) days of it being issued. Please note we accept Visa, Mastercard and AMEX. We do not accept Diners Club. Electronic bank transfer details can be found on the invoice.
- All final invoices are to be paid seven (7) days prior to the event.
- Deposits are non-refundable.
- All incidentals (outstanding beverages, last minute increases to number of guests etc...) are to be settled on the night by cash or credit card.
- The final account and any outstanding charges will be presented to you or a representative of your choice at the conclusion of your event. If you will not be settling the account directly, we ask that you introduce the function supervisor to the person responsible for settling the account on the night.

Catering

Please be advised that our menu is seasonal and that depending on how far in advance you book your event, there may be changes to our offering and packages. We will notify you of any changes once they occur.

Final Details

- Final numbers, menu and dietary requests are required 10 days prior to your function.
- Once final numbers have been confirmed and paid for, we are unable to process refunds if your number of guests decreases. We can however accommodate minor increases up until 48 hours prior to your function.
- All functions are required to arrive at the time of reservation, so we are able to deliver the best experience. Late arrival will not extend the time period at which the space is reserved for your group.

Responsible service of alcohol

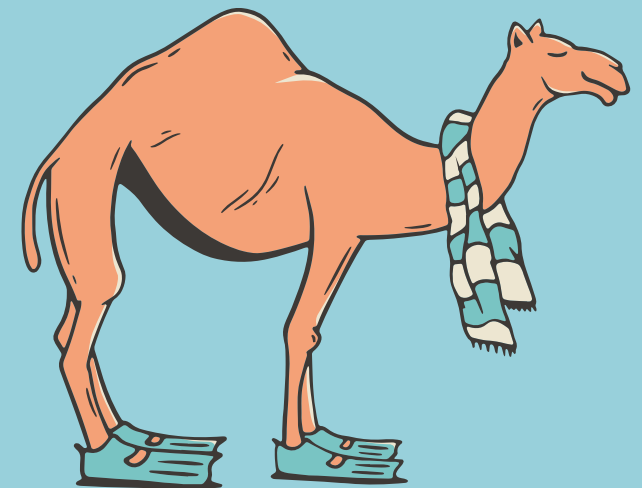
To ensure everybody is enjoying their time at Matso's Sunshine Coast, we adhere strictly to the Responsible Service of Alcohol laws. As such we reserve the right to refuse entry or service of alcohol to any patron that is underage, intoxicated or behaving in an

antisocial manner. ALL guests under the age of 18 are required to be with their legal guardian/parent at all times for them to be able to take part in the function.

Under the liquor licensing laws of Queensland, guests 25 years of age or younger are required to have the correct proof of ID.

We accept the following forms of identification: *(Please note they must be valid, expired forms will not be accepted)*

- Australian Driver's License
- Australian Driver's Learning Permit
- QLD Proof of Age Card
- Passport



GET IN TOUCH

functions@matsosqld.com.au

85 Memorial Dr, Eumundi QLD 4562

